



3, Coffee House Passage, Off The Square, Shrewsbury, SY1 1LH
£650 Per Month



3, Coffee House Passage, Off The Square, Shrewsbury, SY1 1LH

£650 Per Month

VIRTUAL TOUR AVAILABLE - A uniquely designed and recently decorated PART FURNISHED one bedroom ground floor apartment situated within the heart of Shrewsbury town centre a short walk from a range of bars, restaurants and main shopping thoroughfares.

Available: 22/02/25

Description

Comprising: Living/dining room, kitchen with integrated washing machine, full height fridge/freezer, oven and hob, bedroom, study, bathroom with a shower and bath. Electric heating. Double glazing. No parking included. EPC E.



Part furnished

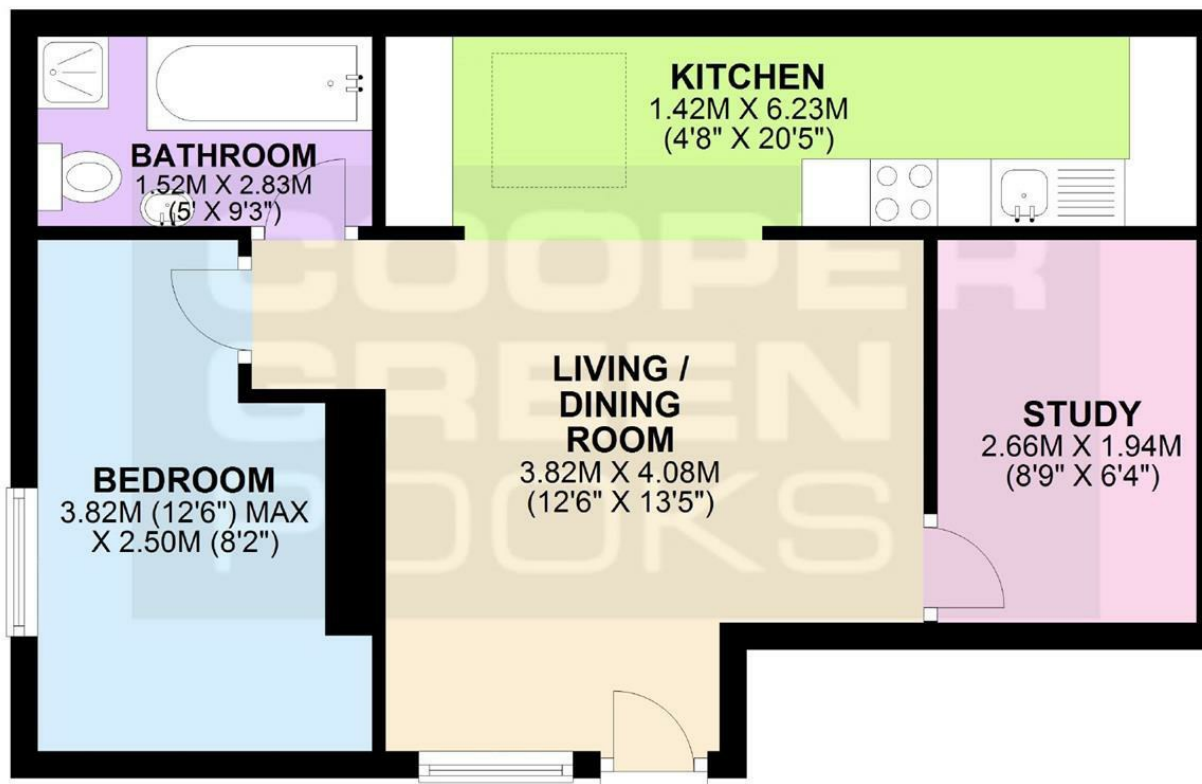
Council Tax Band: A

Available: 22nd February 2025

EPC: E

GROUND FLOOR

APPROX. 40.2 SQ. METRES (432.3 SQ. FEET)



TOTAL AREA: APPROX. 40.2 SQ. METRES (432.3 SQ. FEET)

We accept no responsibility for any mistake or inaccuracy contained within the floorplan. The floorplan is provided as a guide only and should be taken as an illustration only. The measurements, contents and positioning are approximations only and provided as a guidance tool and not an exact replication of the property.

Plan produced using PlanUp.

These particulars, whilst believed to be accurate are set out as a general outline only for guidance and do not constitute any part of an offer or contract. Intending purchasers should not rely on them as statements of representation of fact, but must satisfy themselves by inspection or otherwise as to their accuracy. No person in this firm's employment has the authority to make or give any representation or warranty in respect of the property.